



Housing Morphology in Clerkenwell

Margery St. Estate

Fieldwork & Analysis carried out by Sung Ki, Chung & Markus Lentsch



Lloyd Baker Street



Amwell Street



King's Cross Road

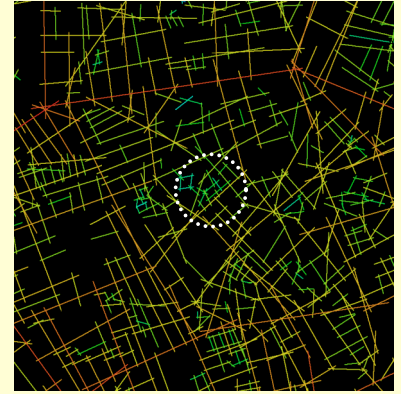


Margery Street

Surroundings

- Residential development area between 2 & 5 storeys
- 4 Public open space
Wilmington Square, Granville Square
- 3 Primary School within 300 meters
- Shopping Facilities
Exmouth Market, Angel shopping area
- Public transport
nearby bus & tube station
St. Pancras station (1/2 mile)
- 3 churches within 1/4 mile
- 2 hospitals & Sadlers Wells Theatre

Variable	Value
Number of axial lines	4727
Mean Global Integration (Radius n)	1.2578
Mean Local Integration (Radius 3)	2.632
Mean Depth from Most Integrated	6.9871
Mean Integration (Radius-Radius)	1.7331
No. of Outside-spaces (connectivity=1)	222



Sunken Garden

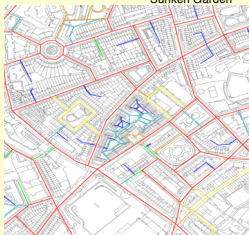


Before - Courtyard (1930's)

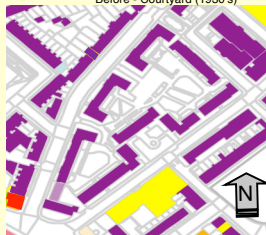


After - Courtyard (present)

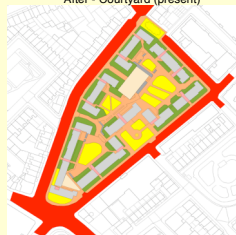
Variable	Value
(EHCS) Housing unit Type	Low-Rise Flat
Purpose built/converted	Residential
Year of original building	1930 - 1933
Year of conversion	1977
(EHCS) ageband	1925 - 1949
Total site area	12,788.60 m ²
No. of storeys	4, 5 and 6
Total area of building foot print	3678.71 m ²
no. of car parking spaces	21
no. of dwelling entrances	14



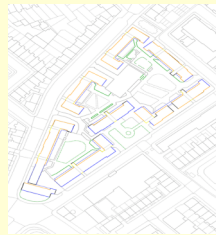
Road Type



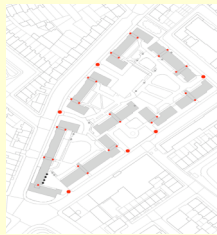
Land Use Map



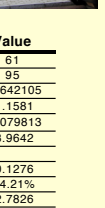
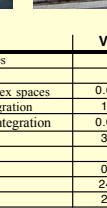
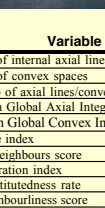
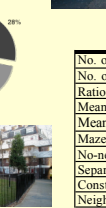
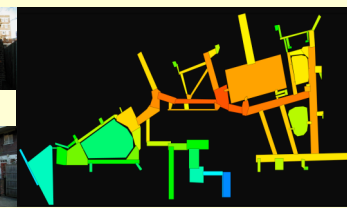
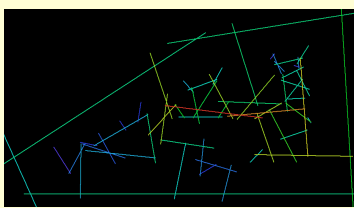
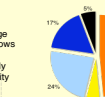
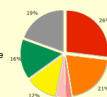
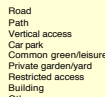
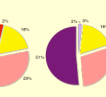
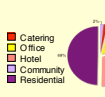
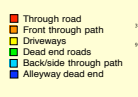
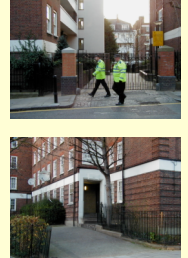
Land Area Distribution Map



Frontages

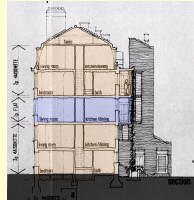
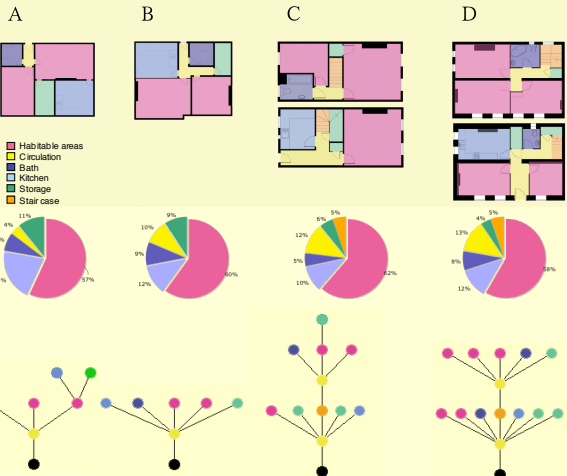


Insert Doors & Entrances

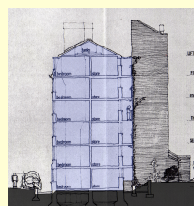


Variable	Value
No. of internal axial lines	61
No. of convex spaces	95
Ratio of axial lines/convex spaces	0.642105
Mean Global Axial Integration	1.1581
Mean Global Convex Integration	0.079813
Maze index	3.9642
No-neighbours score	0.1276
Separation index	24.21%
Constitutedness rate	2.7826
Neighbourliness score	2.7826

Flat Types



Section - Maisonette



Section - Flat



Housing type	Flat					Maisonette
	Habitable Area	Kitchen Area	Bathing Area	Circulation Area	Storage Area	
Type A	49.86	18.19	6.47	3.57	9.36	
Type B	45.33	9.11	7.32	7.32	6.85	
Type C	38.19	6.35	3.36	7.49	3.32	
Type D	57.63	11.62	7.55	12.69	4.17	

Housing Unit	No. of Units	Total Area	No. of Living Spaces	No. of Bedrooms	No. of Bedspaces
Type A	6		1	1	2
Type B	6		1	1	2
Type C	12		2	2	3
Type D	15		2	3	5

Housing type	no. of convex spaces	no. of transition spaces	Mean Global Integration	Mean Depth from Threshold	No. of entrances
Type A	6	1	0.5627	1.99	1
Type B	7	1	1.1387	1.711	1
Type C	12	3	0.8319	2.7	1
Type D	18	3	1.0204	1.02	1